

Automated Scouting Report System

Created and implemented during the 2025–26 season

System Overview & Impact

System Overview

This Automated Scouting Report System was built from the ground up to transform film and statistical data into structured, actionable game preparation. The platform automatically pulls and organizes opponent metrics into position-specific reports that integrate efficiency trends with film validation.

Reports identify play type frequency, efficiency trends, lineup data, and situational tendencies, streamlined into competitive priorities. For players, complexity becomes clarity. For staff, preparation becomes precise.

System Architecture

The system automates data flow to ensure consistency and speed:

- Statistical data automatically organized by player
- Position-based conditional formatting adjusts evaluation standards
- Minute thresholds impact grading and color coding
- Custom strength and weakness badges identify tendencies
- Win and loss pattern analysis highlights structural trends

Badges provide immediate visual identification of strengths and vulnerabilities, reinforcing film and practice planning.

System Impact

Preparation time decreased while strategic clarity increased. Game plans aligned with measurable tendencies. Matchup discipline improved and personnel decisions were supported by data. The system also improved communication across the coaching staff, creating alignment in scouting priorities and defensive game planning. Adjustments became more efficient, allowing preparation to focus on the most impactful opponent tendencies.

The objective is simple: turn information into competitive advantage.

SCOUTING REPORT



Santa Ana

San Diego Mesa



16-13 (3-9)

VS

15-13 (7-5)



February 25, 2026

Top Players

- **#12 Stevie Lundquist (Guard, So.)**
Team's leading scorer (21.7 PPG; 587 pts); heavy minutes (846); disruptive defender with 82 steals and 141 DR
- **#10 MJ Johnson (PG, Fr.)**
Second in scoring (241 pts); primary shooter (24 threes, 30%); distributes 61 assists in 26 games
- **#11 Rylie Willis (Guard, So.)**
Defensive anchor; leads team in blocks (15); averages 8.0 PPG and 7.4 RPG in 683 minutes

Strengths

- **Rebounding Dominance**
Elite on the glass (47.2 RPG; +8.4 margin); Marquez (301) and Lundquist (225) anchor boards
- **Defensive Pressure**
Averages 10.4 steals per game; disruptive press (0.674 PPP); Lundquist (82) leads team
- **Transition Scoring**
High usage (28.6%); good efficiency (0.809 PPP); pushes pace off defensive stops

Weaknesses

- **Ball Security**
High turnover rate (18.6 per game); guards prone to pressure and rushed decisions
- **Free Throw Shooting**
Low team FT% (57.3%); major inconsistency at line limits late-game scoring
- **Perimeter Shooting**
Low three-point efficiency (23.3%); high volume but inconsistent conversion

The logo for Mesa features a large, stylized letter 'M' in yellow with a blue outline, centered at the top. Below the 'M' is a horizontal blue bar with the word 'MESA' written in white, bold, sans-serif capital letters. At the bottom, another large, stylized letter 'M' in yellow with a blue outline is centered, mirroring the top 'M'. The entire logo is set against a white background.

MESA

TEAM RANKINGS

	Overall	Rank	Conference Rank	Opponent
Games	27	49th	11	56th
Points	1779	38th	796	33rd
Points per game	65.9	33rd	72.4	16th
FG made per game	25.7	22nd	28.7	12th
FG attempts per game	72.6	9th	80.3	4th
FG Pct	35.4	48th	35.8	44th
3PT made per game	6.4	24th	6.9	20th
3PT attempts per game	27.4	10th	32.9	4th
3PT Pct	23.3	62nd	21	74th
FT made per game	8.1	69th	8	72nd
FT attempt per game	14.1	70th	14.5	66th
FT Pct	57.3	69th	55.3	76th
Off rebounds per game	18.4	9th	22.2	2nd
Def rebounds per game	28.8	22nd	29.5	20th
Total rebounds per game	47.2	10th	51.7	4th
Opponents' Off rebounds per game	11.4	18th	11.2	25th
Opponents' Def rebounds per game	27.5	55th	25.5	38th
Opponents' Total rebounds per game	38.9	35th	36.6	29th
Rebound margin per game	8.4	16th	15.1	8th
Assists per game	14.7	27th	17.5	16th
Opponents' Assists per game	12.3	43rd	12.4	46th
Turnovers per game	18.6	47th	18.4	55th
Opponents' Turnovers per game	17.8	52nd	18.4	32nd
Steals per game	10.4	45th	11.7	27th
Opponents' Steals per game	9.7	39th	9.5	46th
Blocks per game	1.6	73rd	1.5	67th
Opponents' Blocks per game	2.1	20th	2.2	25th
Personal fouls per game	15	48th	16.7	66th
Offensive efficiency	0.826	43rd	0.865	36th
Net efficiency	-0.009	49th	0.004	47th
Opponents' Personal fouls per game	13.6	68th	12.5	75th
Offensive efficiency	0.826	43rd	0.865	36th
Points per game allowed	63.4	54th	64.6	59th
Opponents' Field goal percentage	37.9	68th	37	56th
Opponents' 3PT percentage	27.6	68th	27.8	62nd
Field goal total-attempts	694-1960	25th	316-883	30th
3 point total-attempts	172-739	25th	76-362	22nd
Free throw total-attempts	219-382	67th	88-159	65th
Opponents' Field goal total-attempts	628-1657	63rd	241-652	47th
Opponents' 3 point total-attempts	120-434	30th	55-198	45th

TOP PERFORMERS

Games Started	Points	1779	Assist	397	Turnovers	501	A / TO	0.80
#12 Lundquist	26	#12 Lundquist	587	#12 Lundquist	72	#12 Lundquist	104	#23 Patrick
#11 Willis	25	#10 Johnson	241	#24 Porch	67	#10 Johnson	67	#22 White
#24 Porch	23	#11 Willis	217	#10 Johnson	61	#24 Porch	66	#11 Willis
#23 Patrick	23	#24 Porch	208	#23 Patrick	60	#11 Willis	53	#24 Porch
#35 Marquez	20	#35 Marquez	190	#11 Willis	55	#23 Patrick	44	#10 Johnson
#10 Johnson	7	#23 Patrick	138	#22 White	27	#35 Marquez	42	#12 Lundquist
#40 Nitzel	6	#22 White	59	#35 Marquez	23	#40 Nitzel	27	#15 Manabat
Minutes	Rebounds	1275	Def Rebs	777	Off Rebs	498	Steals	281
#12 Lundquist	846	#35 Marquez	301	#35 Marquez	188	#35 Marquez	113	#12 Lundquist
#23 Patrick	723	#12 Lundquist	225	#12 Lundquist	141	#11 Willis	109	#11 Willis
#11 Willis	683	#11 Willis	200	#11 Willis	91	#12 Lundquist	84	#10 Johnson
#35 Marquez	665	#10 Johnson	101	#10 Johnson	76	#40 Nitzel	34	#24 Porch
#24 Porch	659	#40 Nitzel	89	#23 Patrick	62	#24 Porch	32	#35 Marquez
#10 Johnson	558	#23 Patrick	86	#40 Nitzel	55	#10 Johnson	25	#23 Patrick
FG Threat	FG	694	FGA	1960	FG%	35%	Blocks	43
#12 Lundquist	21.1	#12 Lundquist	230	#12 Lundquist	510	#35 Marquez	46%	#11 Willis
#35 Marquez	7.7	#10 Johnson	97	#24 Porch	275	#12 Lundquist	45%	#35 Marquez
#10 Johnson	4.6	#24 Porch	86	#10 Johnson	268	#20 Long	41%	#12 Lundquist
#24 Porch	2.6	#11 Willis	84	#11 Willis	268	#40 Nitzel	37%	#40 Nitzel
#11 Willis	2.6	#35 Marquez	77	#23 Patrick	184	#10 Johnson	36%	#24 Porch
#23 Patrick	0.9	#23 Patrick	49	#35 Marquez	166	#11 Willis	31%	#5 Kinser
3P Threat	3FG	172	3FGA	739	3FG%	23%	Fouls	405
#12 Lundquist	9.9	#12 Lundquist	39	#12 Lundquist	153	#10 Johnson	30%	#40 Nitzel
#23 Patrick	7.8	#23 Patrick	33	#23 Patrick	139	#12 Lundquist	26%	#35 Marquez
#10 Johnson	7.2	#10 Johnson	24	#11 Willis	106	#23 Patrick	24%	#12 Lundquist
#11 Willis	5.4	#11 Willis	24	#24 Porch	95	#24 Porch	23%	#11 Willis
#24 Porch	5.1	#24 Porch	22	#22 White	85	#11 Willis	23%	#24 Porch
#22 White	3.8	#22 White	18	#10 Johnson	80	#22 White	21%	#10 Johnson
#05 Kinser	1.5	#5 Kinser	9	#5 Kinser	53	#30 Burnett	18%	#23 Patrick
FT Threat	FT	219	FTA	382	FT%	57%	DQ	3
#12 Lundquist	88.0	#12 Lundquist	88	#12 Lundquist	133	#23 Patrick	70%	#12 Lundquist
#35 Marquez	36.0	#35 Marquez	36	#35 Marquez	89	#10 Johnson	68%	#35 Marquez
#11 Willis	25.0	#11 Willis	25	#11 Willis	44	#12 Lundquist	66%	#30 Burnett
#10 Johnson	23.0	#10 Johnson	23	#10 Johnson	34	#22 White	63%	
#24 Porch	14.0	#24 Porch	14	#24 Porch	23	#24 Porch	61%	
#40 Nitzel	10.0	#40 Nitzel	10	#40 Nitzel	19	#5 Kinser	57%	
#05 Kinser	8.0	#5 Kinser	8	#5 Kinser	14	#11 Willis	57%	

PLAY STYLE

Offense

Spot-Up Shooting — Primary action (28.6%); good efficiency (0.809 PPP)

Transition Attack — High usage (25.2%); average open-floor production (0.606 PPP)

Cutting Actions — Moderate volume (10.8%); low raw PPP (0.312) but rated Very Good

Miscellaneous Sets — Secondary actions (9.8%); average efficiency and situational scoring

Defense

Man — Primary coverage (91.6%); average half-court efficiency

Spot-Up Defense — Defends 26.4% of possessions; very good perimeter containment

Transition — Faces 17.1% in open floor; very good fast-break defense

Press — Applied on 16.8%; good pressure efficiency and disruption

KEYS FOR SANTA ANA TO WIN

1. **Disrupt Mesa's Backcourt**

Mesa averages 18.6 TOs; pressure Porch and Johnson to force rushed decisions and live-ball steals

2. **Force Lundquist Left**

Shade leading scorer (21.7 PPG) to non-dominant hand; limit right-hand finishes and mid-range rhythm

3. **Attack the Post, Draw Fouls**

Feed Beard inside; target Marquez early and force foul trouble to thin interior depth

4. **Make Marquez Earn It at the Line**

40.4% FT shooter; play physical and live with free-throw attempts over clean paint finishes

5. **Win the Rebounding Battle**

Mesa elite on glass (47.2 RPG; 18.4 OR); box out Marquez and Lundquist to limit put-backs

Athleticism / Motor			Shooting				
	Fast	Beats defenders with speed	Strength		3pt Specialist	Elite long-range shooter, spaces the floor	Strength
	Good Cardio	High motor, never tires			Fadeaway	Skilled at shooting off-balance fades	
	Hops	Elite vertical leaping ability			Floater	Touch finish in the lane	
	Strong	Finishes through contact			Scorer	Gets buckets from all 3 levels	
	Bad Cardio	Gassed quickly, fades late			Brick	Misses open shots often	
	Butter Fingers	Bad hands, drops passes			Forces Shots	Forces bad looks	
	Fragile	Handle with care			Hesitant Shooter	Lacks shooting confidence	
	Slow	Struggles in transition		Layup Fail	Misses easy layup attempts		
Finishing & Physicality			Rebounding				
	Post Up	Comfortable with post moves	Strength		Box Out	Seals and clears space on boards	Strength
	Rim Finisher	Converts well around the basket			Mebounds	Rebounds her own misses	
	Sealing	Holds position, creates space inside			Rebounder	Tracks and secures boards	
	Slithery	Slips through traffic, hard to trap			Board Ghost	Low rebounding impact, rarely involved	
	Dog	Tough, gritty, never backs down	Strength		94 Feet Defender	Full court pressure disrupts rhythm	Strength
	Glue Guy	Hustle player, does the little things			Charge	Anticipates drives, takes contact for turnovers	
	Emotional	Emotionally reactive			Help Defender	Always rotates/help side	
	Foul Trouble	Undisciplined player			Lockdown Defender	Shuts down top scorers	
	Hot Head	Emotional, loses focus under pressure			Pick Pocket	Quick hands, gets steals	
	Lazy	Low motor, poor effort plays			Shot Blocker	Alters and rejects shots in paint	
	Pouts	Body language affects team			No Help	Poor Rotations / No Defensive Support	
	Streaky Scorer	Inconsistent Scorer		No Stance	Upright, poor posture, no resistance		
Playmaking & Vision			Skill Limitations				
	Dimer	Elite passer, finds open teammates	Strength		No Handles	Struggles under pressure	Weakness
	Handles	Elite ball control			No Left Hand	Force left always, can't finish left	
	High IQ	High-level thinker, always a step ahead			No Right Hand	Force right always, can't finish right	
	Key Player	Best player, team is built around them			Out Of Control	Wild drives, poor decisions	
	P&R Maestro	Pick-and-roll decision-maker			Short	Limited height, struggles with reach	
	Bad Court Vision	Misses open teammates consistently		Weakness		Traveler	



San Diego Mesa

February 25, 2026

15-13 (7-5)

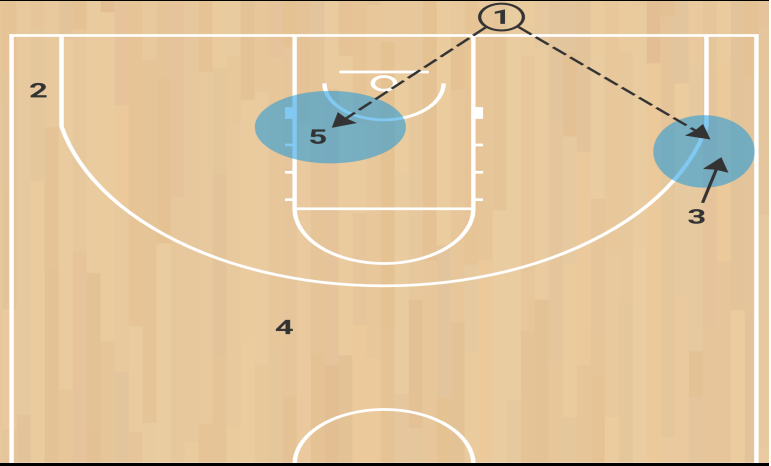
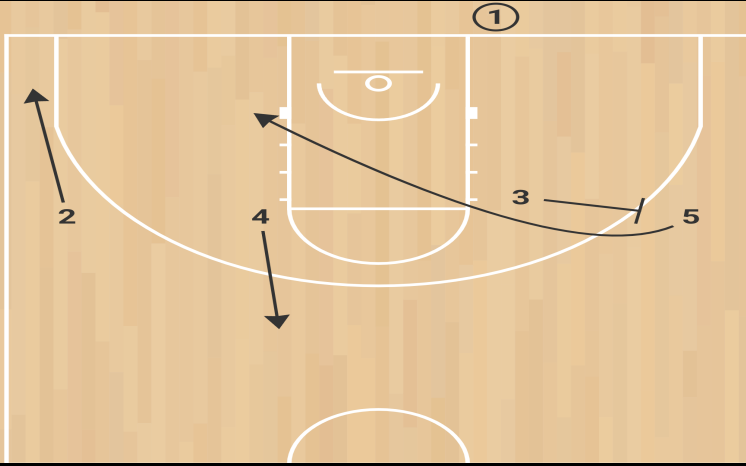
7:00 PM

TEAM COMPARISON			LEADERBOARD		
Stats	SDMC	Margin	SAC	3P Threat	FT Threat
Pts	65.9	-2	63.9	#12 - 9.9	#12 - 88.0
Opp	63.4	8	55.4	#23 - 7.8	#35 - 36.0
Reb	47.2	-7.3	39.9	#10 - 7.2	#11 - 25.0
Ast	14.7	-1	13.7	#11 - 5.4	#10 - 23.0
Blk	1.6	0.9	2.5	#24 - 5.1	#24 - 14.0
Stl	10.4	0.6	11	#22 - 3.8	#40 - 10.0
TO	18.6	4.5	14.1	#05 - 1.5	#05 - 8.0
FG%	35%	0.8	36%	#30 - 0.5	#23 - 7.0
3P%	23%	2.6	26%	#35 - 0.0	#22 - 5.0
FT%	57%	6.1	63%	#20 - 0.0	#20 - 1.0

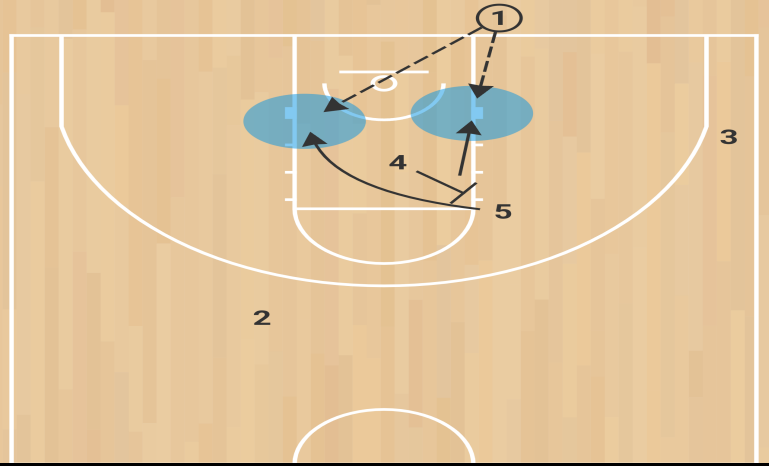
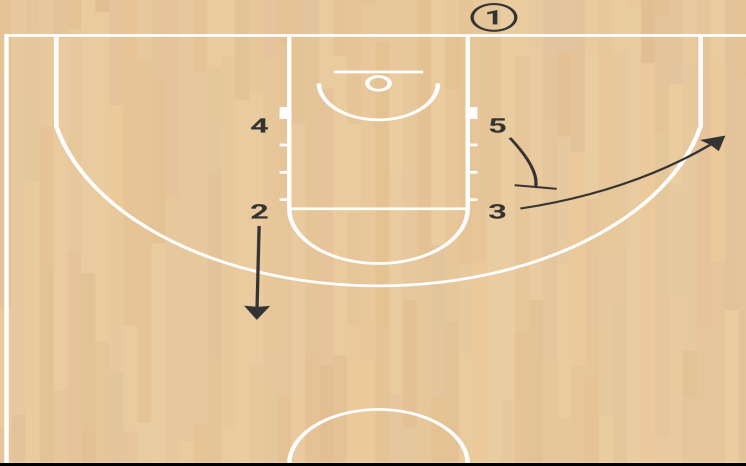
STARTERS											Strengths		Weaknesses		Notes
	#	Player	Pts	Reb	Ast	FG	FGA	3FG	3FGA	FT	FTA			- 3 way scoring guard? - She's a liability when guarding the ball. We need to go at her	
	Ht	Position	Mins	Yr	Blk	Stl	To	FG%	3P%	FT%					
	5'7	G	25	So	0.6	2.1	2	31%	23%	57%					
	#	Player	Pts	Reb	Ast	FG	FGA	3FG	3FGA	FT	FTA			- Strong guard, will post up in the block against smaller defenders - Her Mid-Range is her bread and butter - NO LEFT HAND!!!! Right handed finishes every time	
	Ht	Position	Mins	Yr	Blk	Stl	To	FG%	3P%	FT%					
	5'7	G	31	So	0.3	3	3.9	45%	26%	66%					
	#	Player	Pts	Reb	Ast	FG	FGA	3FG	3FGA	FT	FTA			- Pick her off every time she dribbles the ball, she looks down. - Deep Shooter - 76% of her shots are 3s	
	Ht	Position	Mins	Yr	Blk	Stl	To	FG%	3P%	FT%					
	5'8	G	30	So	0	0.9	1.8	27%	24%	70%					
	#	Player	Pts	Reb	Ast	FG	FGA	3FG	3FGA	FT	FTA			- If there's space she'll shoot it, good shot or bad. - Pressure her, makes a lot of bad decisions for a PG	
	Ht	Position	Mins	Yr	Blk	Stl	To	FG%	3P%	FT%					
	5'8	PG	24	Fr	0.1	1.1	2.4	31%	23%	61%					
	#	Player	Pts	Reb	Ast	FG	FGA	3FG	3FGA	FT	FTA			- Wall Up Close Out!!! Don't bail her out - Post must give her a shot fake, she will jump. Be patient and sell the move - It's okay if we send her to the FT line, she's a brick	
	Ht	Position	Mins	Yr	Blk	Stl	To	FG%	3P%	FT%					
	5'10	PF	25	Fr	0.3	0.9	1.6	46%	-	40%					
RESERVES											Strengths		Weaknesses		Notes
	#	Player	Pts	Reb	Ast	FG	FGA	3FG	3FGA	FT	FTA			- Looks very lazy on the court, our guards need to punish her and make it a long night for her. - She a shoot first PG, she'll force anything	
	Ht	Position	Mins	Yr	Blk	Stl	To	FG%	3P%	FT%					
	5'4	PG	22	Fr	0	1.2	2.6	36%	30%	68%					
	#	Player	Pts	Reb	Ast	FG	FGA	3FG	3FGA	FT	FTA			- 94% of her shots are 3s - Quick Trigger	
	Ht	Position	Mins	Yr	Blk	Stl	To	FG%	3P%	FT%					
	5'3	G	11	So	0	0.3	1	20%	21%	63%					
	#	Player	Pts	Reb	Ast	FG	FGA	3FG	3FGA	FT	FTA			- 65% of her shots are 3s - Not A Threat!!!!	
	Ht	Position	Mins	Yr	Blk	Stl	To	FG%	3P%	FT%					
	5'8	G	9	Fr	0.1	0.4	1	25%	17%	57%					
	#	Player	Pts	Reb	Ast	FG	FGA	3FG	3FGA	FT	FTA			- Give her fakes and make a move. Does Side wall close outs, take advantage of this - Be physical wih her - Soft	
	Ht	Position	Mins	Yr	Blk	Stl	To	FG%	3P%	FT%					
	5'10	C	13	Fr	0.2	0.3	1.1	37%	-	53%					
	#	Player	Pts	Reb	Ast	FG	FGA	3FG	3FGA	FT	FTA			- She's just looking to get a bucket out there - Not A Threat!!!! - LET HER SHOOT IT!!!	
	Ht	Position	Mins	Yr	Blk	Stl	To	FG%	3P%	FT%					
	5'8	PF	6	So	0	0.1	0.9	14%	18%	-					
	#	Player	Pts	Reb	Ast	FG	FGA	3FG	3FGA	FT	FTA			- 45% of her shots are 3s - Not A Threat!!!!	
	Ht	Position	Mins	Yr	Blk	Stl	To	FG%	3P%	FT%					
	5'2	G	6	Fr	0	0.1	1	37%	-	53%					

BLOB

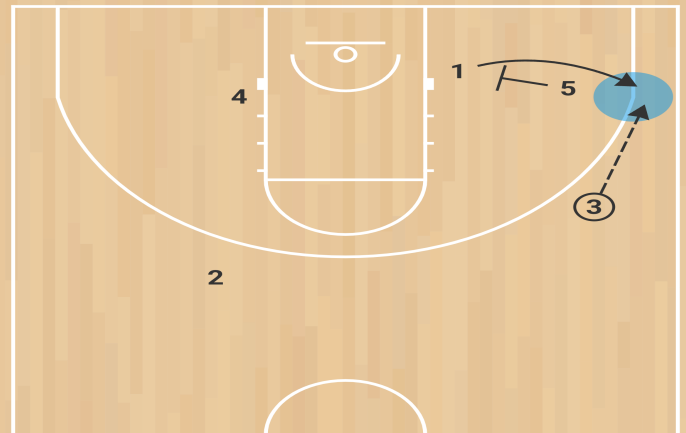
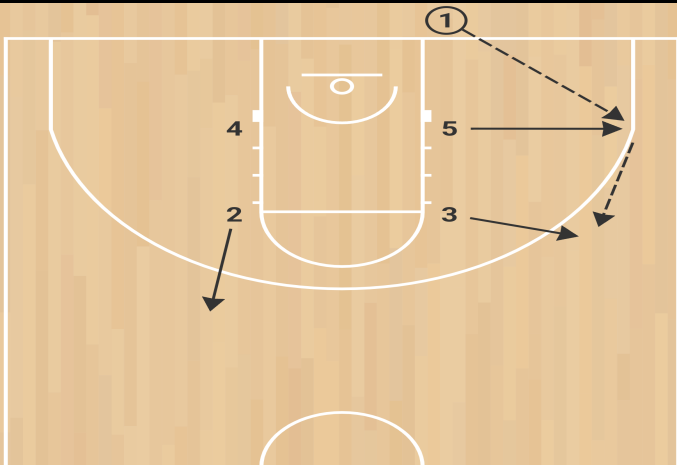
4 Flat High



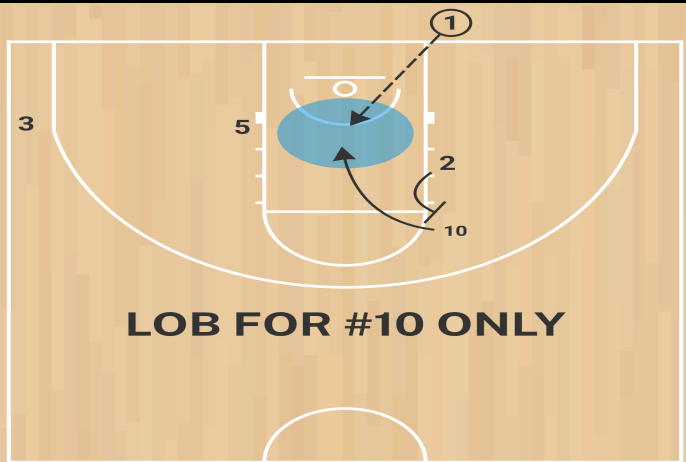
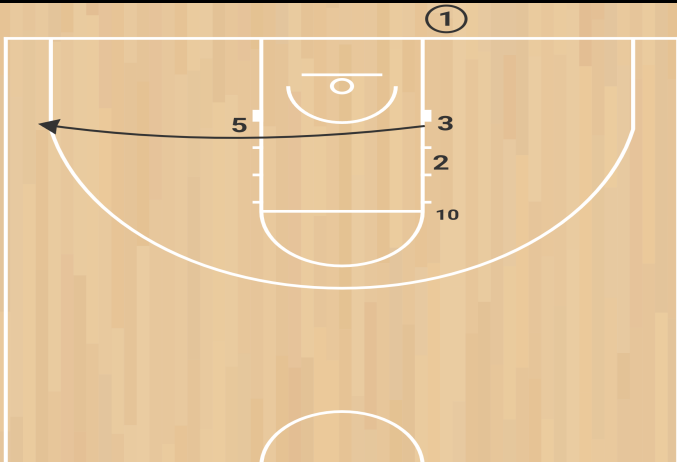
Box



Box Inbounder



7 LOB



LOB FOR #10 ONLY